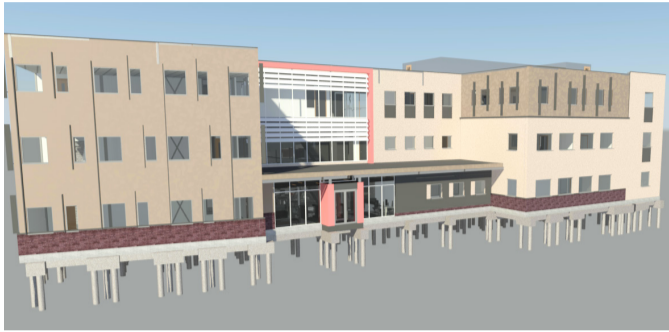


# MIDAS Building Information Modelling [BIM] Policy



Midas Group operates five companies within its portfolio covering Construction, Residential, Maintenance and Developments.

- Construction: Midas Construction offers a complete range of construction related services to both public and private sector organisations. Midas Retail provides fast-track construction solutions for a wide range of both small and large scale retail projects.
- Residential: Mi-Space Living is a specialist company operating within the housing sector, providing innovative and sustainable construction, refurbishment and development services.
- Maintenance: MiSpace Property Services provides planned and reactive maintenance services
- Developments: Midas Developments is the property development division, focussing on industrial and commercial projects covering all aspects of development from speculative projects to pre-lets.

Our vision is to be widely acclaimed for industry leading performance and customer service. In order to achieve this vision we embrace collaborative working environments, deliver industry best practice and ensure that our customers secure optimal benefit from their assets throughout their lifetime.

Building Information Modelling [BIM] is a collaborative process, using digital technologies enabling more lean, accurate and complete design information for an effective construction process through to maintaining building assets.

It provides us with a greater level of integration with our client, consultants and supply chain as well as internal teams and facilitates clients with better tools for asset management.

The Midas Board are committed to the development and implementation of BIM capabilities within the Midas Group demonstrated through our Lloyds Register BIM accreditation as **Project Delivery provider (Business systems)-Tier 1 (Project Provider)** inc. full compliance with PAS91:2013, PAS1192-2:2013, PAS1192-3:2014, PAS1192-5:2015, BS8536-1:2015, BS8536-2:2016 and all published sections of BS1192.

Midas ongoing commitment to BIM is supported through our dedicated BIM Team and internal Focus Group to drive adoption through:

- company protocols and processes aligned with BIM
- increased awareness and understanding of current BIM standards and protocols across the group
- development of BIM capabilities throughout Midas teams ensuring that learning is shared throughout our business from inception to completion
- activity with BIM Regional and National 'Best Practice' groups and Digital Forums to further implement and support BIM across our wider industry.

The scope of this policy applies to Midas Group Limited and all of its subsidiaries and associated companies including Midas Construction Limited, Midas Retail Limited, Midas Commercial Developments Limited, MiSpace Property Services Limited and Mi-Space (UK) Limited.

The policy will be reviewed annually and be adapted to ensure it remains in line with company objectives and compliant with legislation.

This policy will be communicated to all staff via the intranet and copies will be posted on all our office notice boards. Furthermore, it will be made available to members of the public via the Midas website and on request.



Alan Hope  
Chief Executive Midas Group  
November 2020